



## **Hyper Private LTE/5G - Secured Communication Platform for Healthcare**

### **The DIBSYS Inc.'s Advantage**

**DIBSYS Inc. can help you increase  
revenues, reduce costs, save time,  
and help you grow fast.**

# About DIBSYS Inc.

DIBSYS Inc. provides tailored private network communication platform and services along with hierarchical management, security, and billing platform designed for the private networks (4G and 5G).

We help system integrators, hardware manufacturers and enterprises integrate IoT into their business, whatever the requirements.

# DIBSYS Inc.'s Client



# Private Network in Healthcare

## Why?

- **COVID-19** – strain on doctors, nurses, healthcare resources.
- 69% of UK healthcare leaders believe there will be a new surge of workplace/industry automation due to Coronavirus (McKinsey)
- **Rising demand for Telehealth** – 64.3% increase expected starting in 2020 in the US
- Up to **70% of time** spend on routing, administrative tasks (McKinsey)
- Predicated **shortage of up to 122,000 physicians** by 2032 (Association of Medical Colleges)
- **Growing & aging population** – one in six aged over 65 by 2050 ( UN)



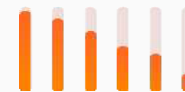
69%



64.3%



70%



-122,000



# Benefits of transforming the industry

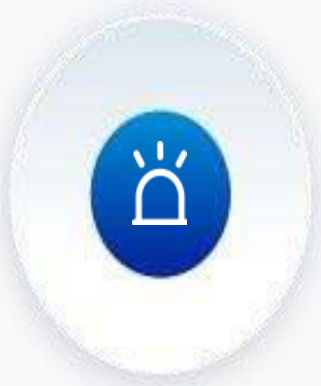
- Free up professionals to focus on more **patient-centered roles**
- **Improve quality of care and patient outcomes** through integration of technologies e.g. AI, ML
- Switch towards **preventive medicine**, with healthcare seamlessly integrated into App
- Extending healthcare outside of hospital **reduces costs and improves quality of life for the patient**

# Business Challenges

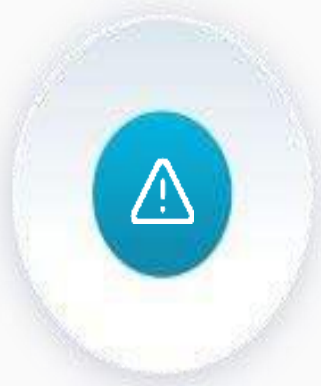
- High demand of **mission-critical IoT devices** requiring **real-time** monitoring/alerts
- **Private and Confidential patient data** – public services: most sensitive data, most regulations and highest consequences of breach
- Rising number of **cyber-attacks** – reconnaissance attacks increased 83.5% in 2019 (Subex Security)
- **Multiple Devices/App** for various Healthcare work loads : Paging, Nursing station, Communications
- Organization operate **multiple complex sites** in varying locations, each with their own network



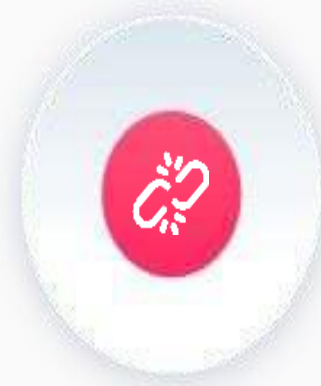
# Challenges For Connected HealthCare Org's?



- WiFi connection insecure & unstable.
- Other technologies such as LPWAN are not ubiquitous.
- Public mobile networks not designed to serve global enterprise IoT



- Lack of flexibility & control



- Inadequate security - threat landscape becoming much more sophisticated

# Introduction to Private LTE networks

- Enterprises can deploy their own private LTE networks - high levels of data security, network separation and consolidation over traditional cellular services
- Flexibility to run 'X' packet gateways (P-GWs) as needed to segregate and control traffic within private security domain
- Simplification of operator interconnects, consolidating cellular traffic through a common network
- WiFi complementary to private LTE - ability to leverage the existing wireless network for legacy hardware, while more mission-critical devices can be moved over to the private cellular network

Private LTE on public networks

Private LTE radio networks such as CBRS in USA Pre-cursor to expected growth in 5G network slicing

Enables



# DIBSYS Inc. Private Network Communication Platform

Adaptive  
Networks  
without  
Complexity

Integrated  
End to End  
Network  
Solution

Secured  
Converged One-  
App for  
Enterprise

AI-Powered  
Application  
Level  
Assurance

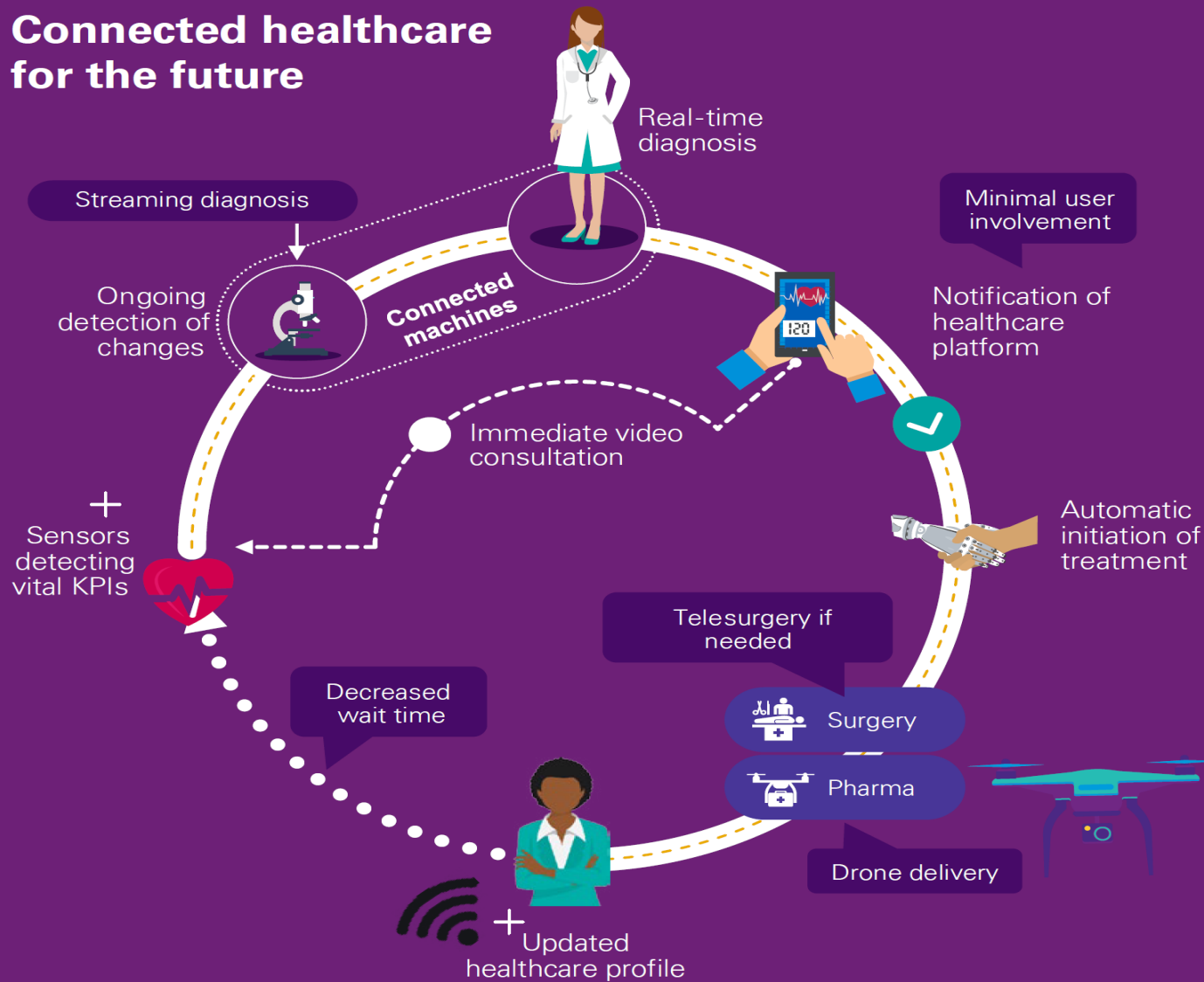


# DIBSYS Inc. Platform for Healthcare provider



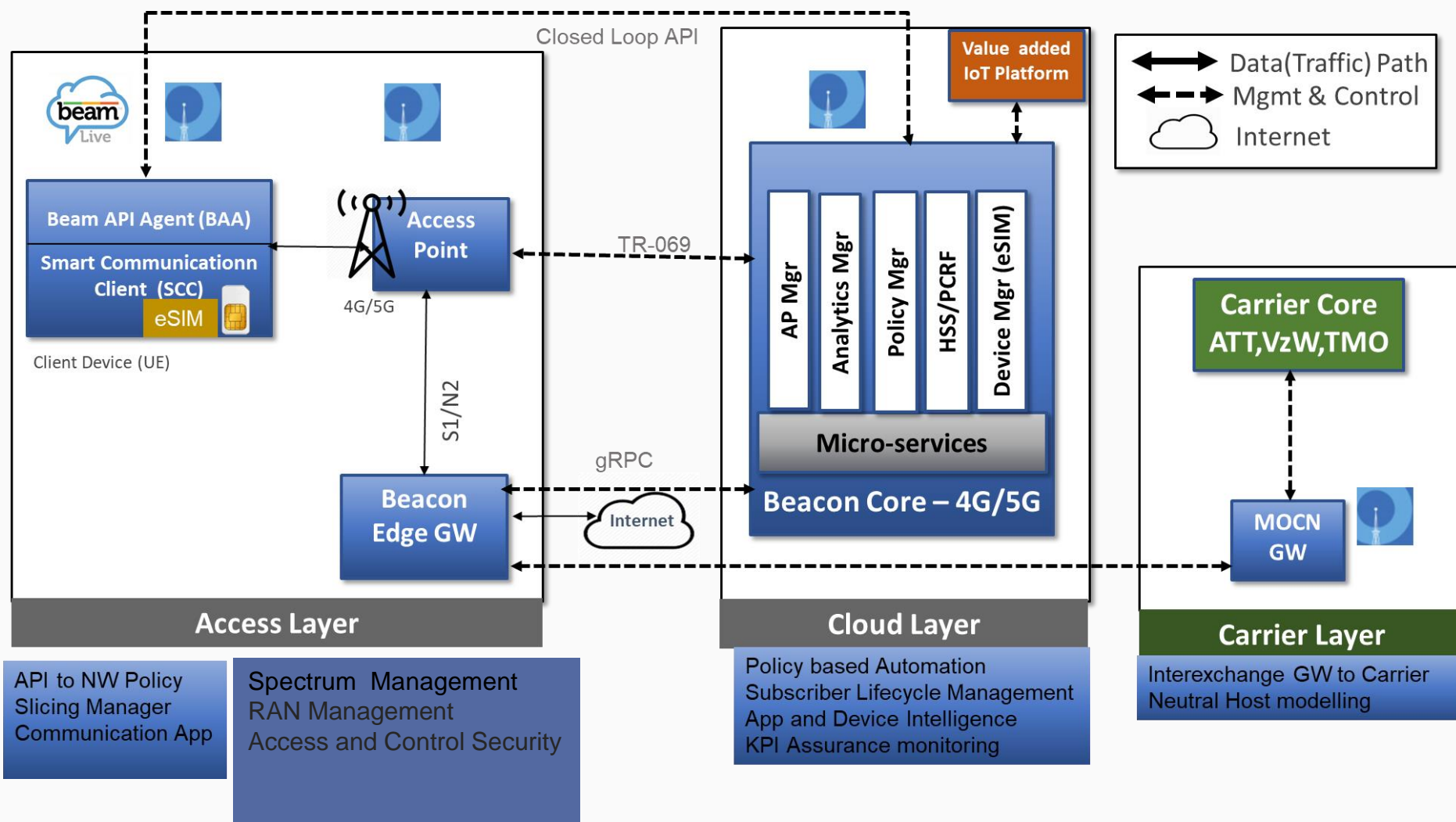
# Virtual Connected Healthcare

## Connected healthcare for the future

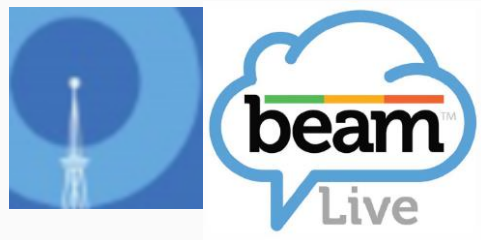


*"In Covid Era, we are helping to quickly to deploy sensors, devices, platforms and network serve remote campus locations with integrated Private Network communications to help on-side healthcare workers care for patients with a cohesive next generation solution"*

# DIBSYS Inc. Private LTE Architecture



# DIBSYS Inc. Private LTE/5G Product Suite



## Secured Communication Platform powered by Beams

Single Device, PTT, Pager, Group Chat



## AI-powered Integrated Operations

App based QoS, Network Slicing,  
Network, Subscriber/SIM, Application SLA



Beacon Edge

## Enterprise LTE/5G controller

Configure Private network like a WiFi Router  
Cloud-native Network for hyper deployment



Beacon RAN

## Beacon CBRS RAN

Indoor and Outdoor CBSDs

# Value Proposition

Converged Secured Communication App

- **Voice, Video, Group Chat, PTT, Paging**
- Secured Communication Network API for QoS

Beacon HyperSlicing, QoS Slicing

- **Per device/app network slicing, autoconfigured and on-demand**

Manage the private network with just IT experience

- Configure the Private Network like a WiFi router
- Cloud Native Architecture – On-Prem, Public/Private Cloud
- Network Convergence with existing IOT platform
- Fully Hosted – PAYG model
- Neutral host with MOCN GW



# Value Proposition

## Advantages to Hospitals

- Owns Secured Cellular network
- Control their traffic 100% end to end for optimal security, flexibility and efficiency
- Convergence of App with guaranteed QoS
- Provides seamless mobility and Voice calls
- Help control telecom expenses and increase data security
- Keep the majority of the data traffic inside of their firewall's
- Eliminate hard-wired security cameras, saving significant time and cost of running fiber in hard to reach areas
- Additional revenue
  - Neutral host for In-building cellular coverage (like DAS today) for mobile phones (single set of cellular AP's for multiple mobile operators) using DSDS technologies

# Product – beamRx Market Segment – Healthcare / Telemedicine

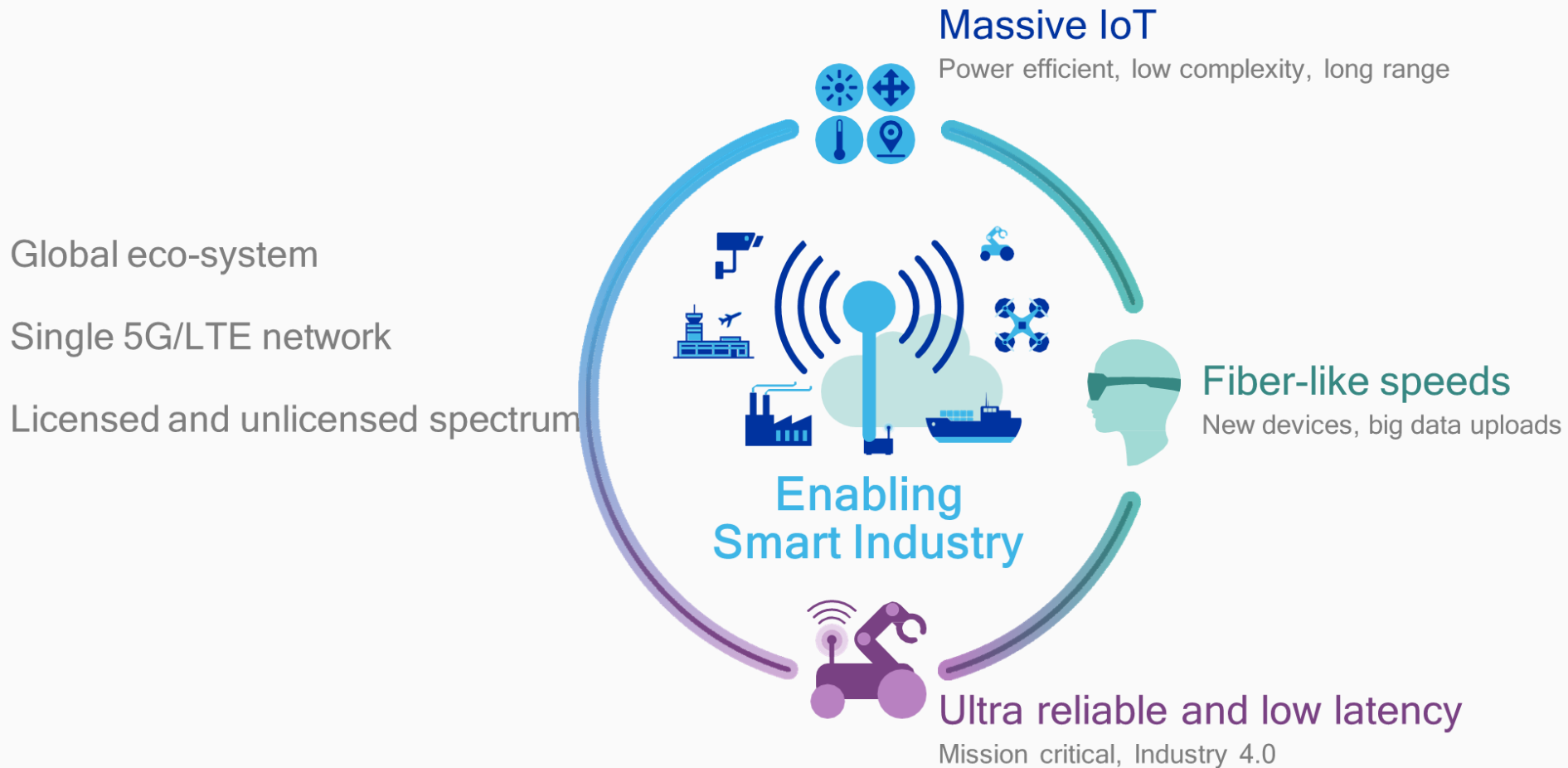
Beam utilizes Internet of Things (IoT) Data, GPS and AI algorithms to monitor and track people, assets and resources globally.

beam Mobile IoT Communication can significantly impact:

- Contact Tracing;
- Distance Medicine;
- Patient-Physician Remote Scheduling/Meeting/Visuals;
- Key Asset Tracking - Indoor and Outdoor;
- Emergency & Scheduled Medical Transportation.



# Private LTE network roadmap to 5G



# Why DIBSYS Inc.?



## Breadth of solution

Beacon gives you one partner who can cover a broad range of infrastructure needs. RF and fiber connectivity, cellular and Wi-Fi, converged network management, small cell and backhaul, along with the services and expertise to bring it all together



## Long-range vision

5G, Wi-Fi 6, IoT...it's our job to know what's next. With a proven track record of success, Beacon gives you confidence that the infrastructure you deploy today will be ready for the communication challenges of tomorrow



## Project management

Every smart city project involves multiple vendors, dozens of process steps, and hundreds of tasks. Beacon offers professional services to help orchestrate and simplify



## Partner ecosystem

Our alliances include application developers, distributors, installers, integrators and consultants—all of whom are dedicated to keeping our customers ready for whatever is next

# Increasing Competition

In an increasingly competitive marketplace, more businesses than ever before are competing for new Client and new Leads. DIBSYS Inc.'s provides comprehensive coverage of technology resources and expertise on your IT delivery needs.

Thus, you can focus on your Customer's needs and adding new Customer /Clients.

DIBSYS Inc.'s is the one-stop IT resource that helps your business:



**Maintain a Competitive Edge**

**Decrease your IT Overheads**

**Maximize Your Profit**



# Service Offerings – Development, Integration, QA, Implementation

- ☐ **Full Time Resources – Onsite**
- ☐ **Contract To Hire Resources - Onsite**
- ☐ **Contract Resources – Onsite – “Short Term & Long Term”**
- ☐ **ODS – Offshore Delivery Center**
- ☐ **New Technology & Tools Implementations – Software & Hardware**
- ☐ **Training**

# Service Offerings – ERP, Java, .Net

- ☐ **IT Consulting Strategy Definition and Assessment**
- ☐ **Reusable Components and Framework Development**
- ☐ **Custom Product Implementation**
- ☐ **Application Development and Management**
- ☐ **Application Migration and Re-engineering**
- ☐ **Maintenance & Support – Existing Enterprise Application**
- ☐ **Project Management – PMO**
- ☐ **QA Practice – Tools implementation, Automation Framework**

# Technology Offerings – Development, Integration, QA, Implementation

- SAP (all areas – Integration, QA, Implementations)
- JD Edwards (all areas – Integration, QA, Implementations)
- Oracle ERP (all areas – Integration, QA, Implementations)
- PeopleSoft (all areas – Integration, QA, Implementations)
- Siebel (all areas – Integration, QA, Implementations)
- Cloud Computing Solutions (Integration, Implementations & Testing)
- Private LTE & 5G Network Solutions
- Data Warehouse, Data Migration, Data Mining, Data Analytics & Data Profiling
- Mobile Apps Development (iOS & Android) and Mobile Web Development
- Java & .NET - Developers & System Architect
- Web & Application Development - Developers & System Architect
- Quality Assurance - Manual & Automated, Testing COE & Testing Tools Implementation
- DBA's & System/Network Engineer's & Network Admins
- Project Management & PMO
- ODC - Offshore Delivery Center
- Software & Hardware - Reseller

# Project – Service Offerings

For DIBSYS Inc. getting Projects into production is not good enough.

Our consultants become actively engaged in every project and pass along valuable knowledge to our customer's staff.

This ensures that each customer has the information and skills they need to support their Project installation long after DIBSYS Inc. has completed the project.

# Project – Service Offerings

We perform a complete array of related consulting services – from needs analysis through go-live:

- ☐ Requirement Definition
- ☐ Business Process Consulting
- ☐ Application Consulting
- ☐ Project Management
- ☐ Configurable Network Computing (CNC)
- ☐ System Integration
- ☐ Implementation Services
- ☐ User Productivity Kit
- ☐ Custom Application & Features Development
- ☐ BI Publisher
- ☐ Training

# Project – Value Added Offerings

Beyond our consulting services, DIBSYS Inc. also has wealth of experience providing and integrating:

- ☐ RF data collection and mobile workforce solutions
- ☐ Document Output/Management
- ☐ Mobile Distribution, Sales & Delivery
- ☐ Business Intelligence
- ☐ Hardware Sales & Upgrade
- ☐ Mobile Construction Applications
- ☐ Custom Projects



# Project – Implementation Methodology

DIBSYS Inc. utilizes best-in-class project management practices and a proven methodology for delivering high-quality implementation and consulting services:



# Project – Implementation Methodology

- Project Planning – Planning and organizational readiness assessment to determine project objective, change management, decision-making, risk management and key resources.
- Business Draft – Define project clearly to fit specific business processes and create comprehensive blueprint of the process associated with system implementation.
- Execution – Initiate system configuration, prepare for pilot, train the project team, system tested and fine-tuned in preparation for GoLive.
- Go Live – Prepare for production start-up, complete final system test, readiness assessment and end-user training completed.
- Project Closing - Ensure all objectives has been achieved, documentation is turned over to customer and receive a final sign-off.



Thank you